

How to import an item (file .sit)

How to import an item (file with .sit extension) into an existing project.

Online version: <https://nextgen.sant-ambrogio.it/KB498425>

Latest update: 02 ott 2014

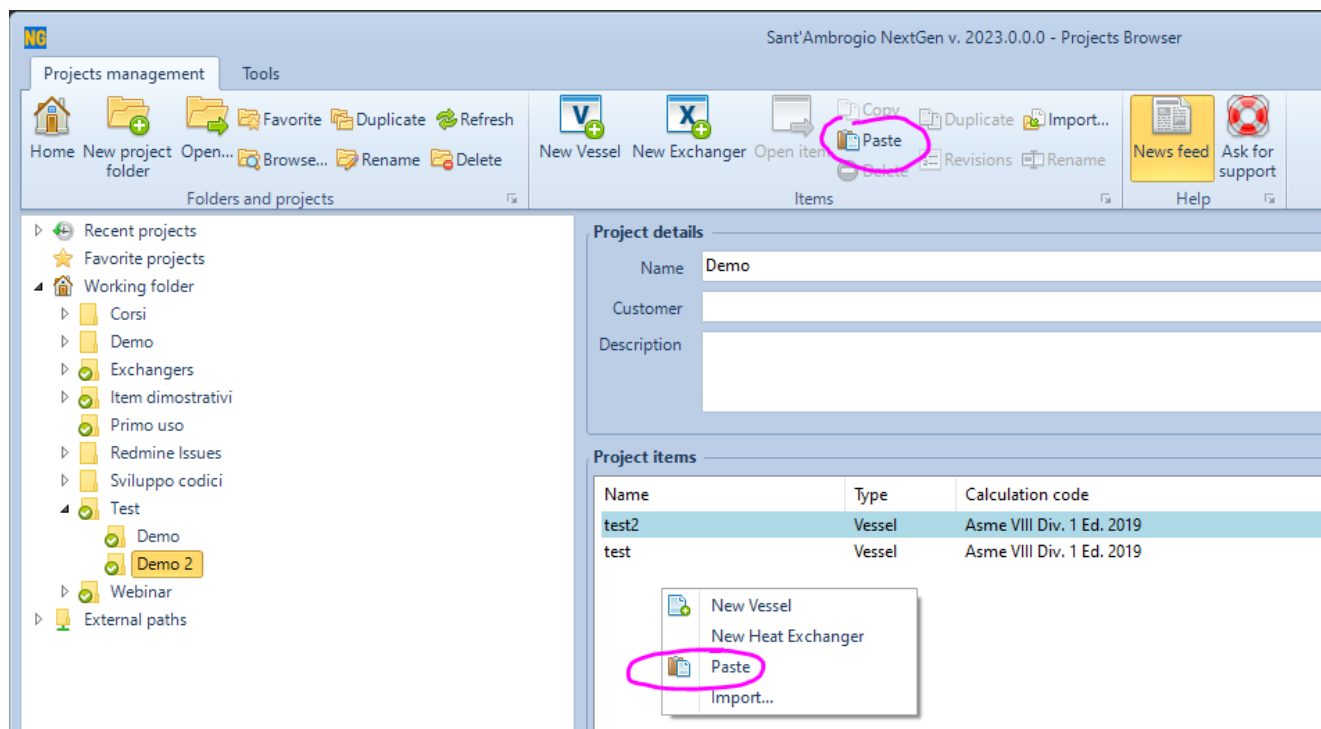
To import an item, vessel or exchanger, through its ".sit" file within an existing project, it is possible to proceed in different ways:

Adding the file to the project folder

- With NextGen closed, save the .sit file you want to import into the folder where you want it to appear. Generally, project folders are contained in My Documents\Sant'Ambrogio Projects, but this folder can vary
- Once NextGen is started, the project folder is scanned and the file automatically imported

Copy-paste into Projects Browser

- Make "copy" (right click, copy) on the file you want to import
- With NextGen started, go to the Projects Browser on the project folder where you want to import the file
- "Paste" by selecting the button on the ribbon or the contextual menu item that appears by right-clicking



Import function via Projects Browser

- With NextGen started, go to the Projects Browser on the project folder where you want to import the file
- Select the import button from the ribbon

The screenshot shows the 'Sant'Ambrogio NextGen v. 2023.0.0.0 - Projects Browser' application. The top toolbar contains various icons for project management, including 'Home', 'New project folder', 'Open...', 'Browse...', 'Favorite', 'Duplicate', 'Refresh', 'Rename', 'Delete', 'New Vessel', 'New Exchanger', 'Open item', 'Copy', 'Paste', 'Delete', 'Duplicate', 'Revisions', 'Import...', 'News feed', and 'Ask for support'. The 'Import...' icon is circled in pink. The left sidebar shows a tree view of projects, with 'Test' expanded to show 'Demo' and 'Demo 2'. The main area is divided into 'Project details' and 'Project items' sections.

Project details

Name: Demo

Customer:

Description:

Project items

| Name | Type | Calculation code |
|-------|--------|---------------------------|
| test2 | Vessel | Asme VIII Div. 1 Ed. 2019 |
| test | Vessel | Asme VIII Div. 1 Ed. 2019 |